

824

3.75  
x16

5x4

5x12

7.5  
x8

- 96 Events 12 24
- 12 Events
- 20 Events
- 36 Events
- 60 Events
- 24 Events

827

830

833

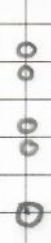
F#m

D7

836

Gm

839



Continue in Gm. →

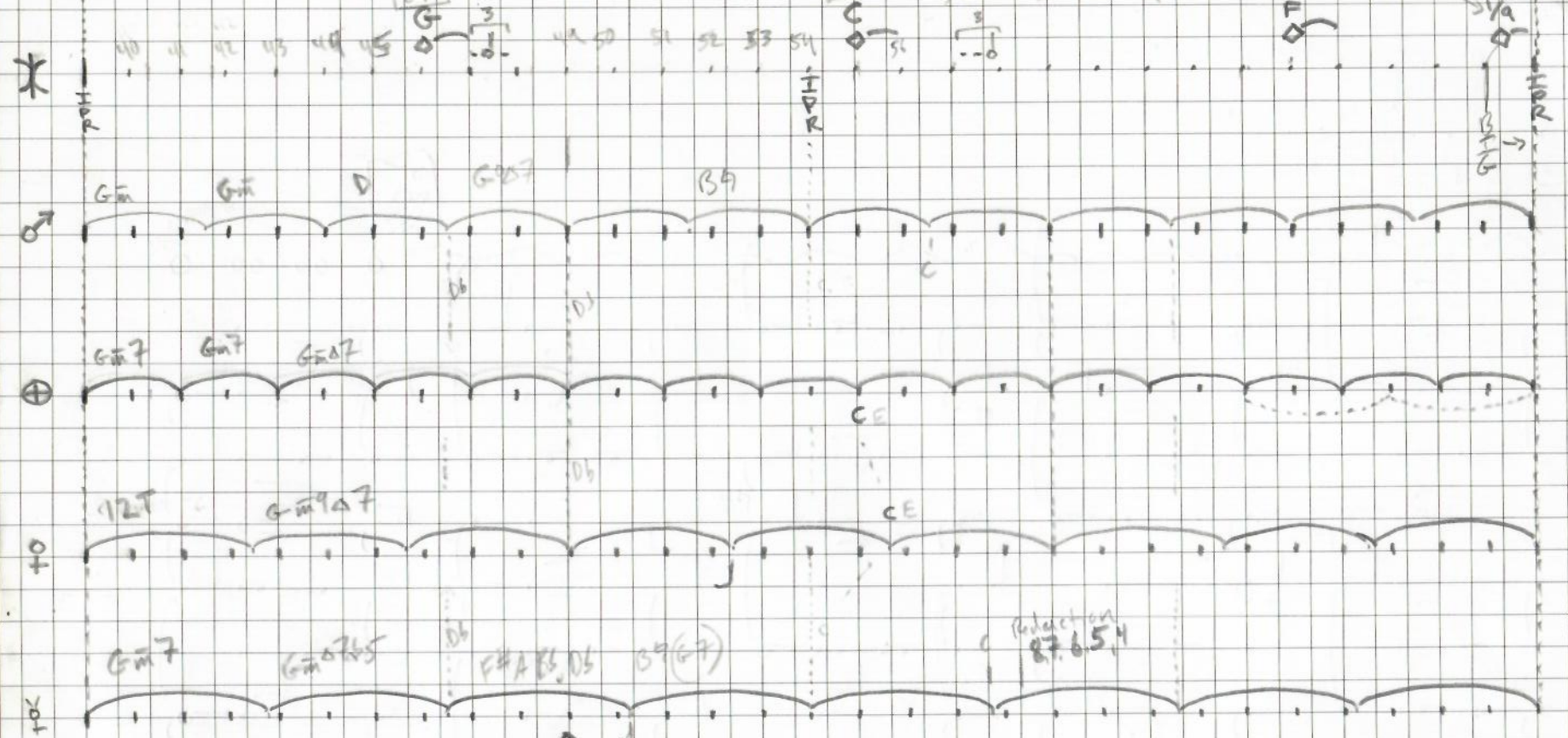
839

846

855

864

7/EP 869



F	→ F#
D	D
Bb	Bb
G	G

F#	→	E
Db	→	C
Bb	→	Bb
G	→	G

G7ALT

↑  
F7ALT

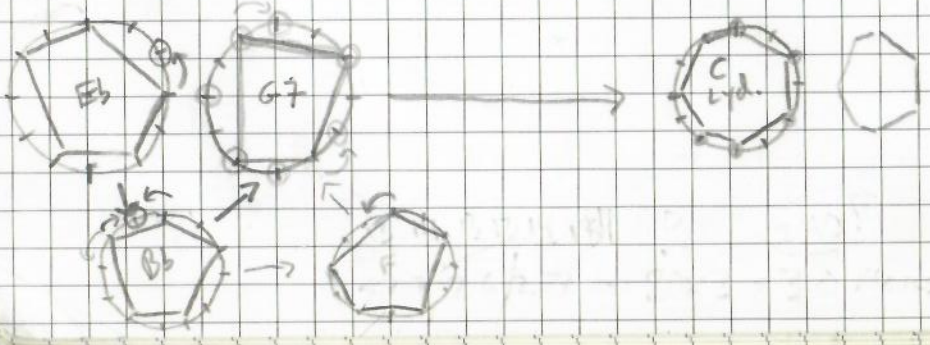
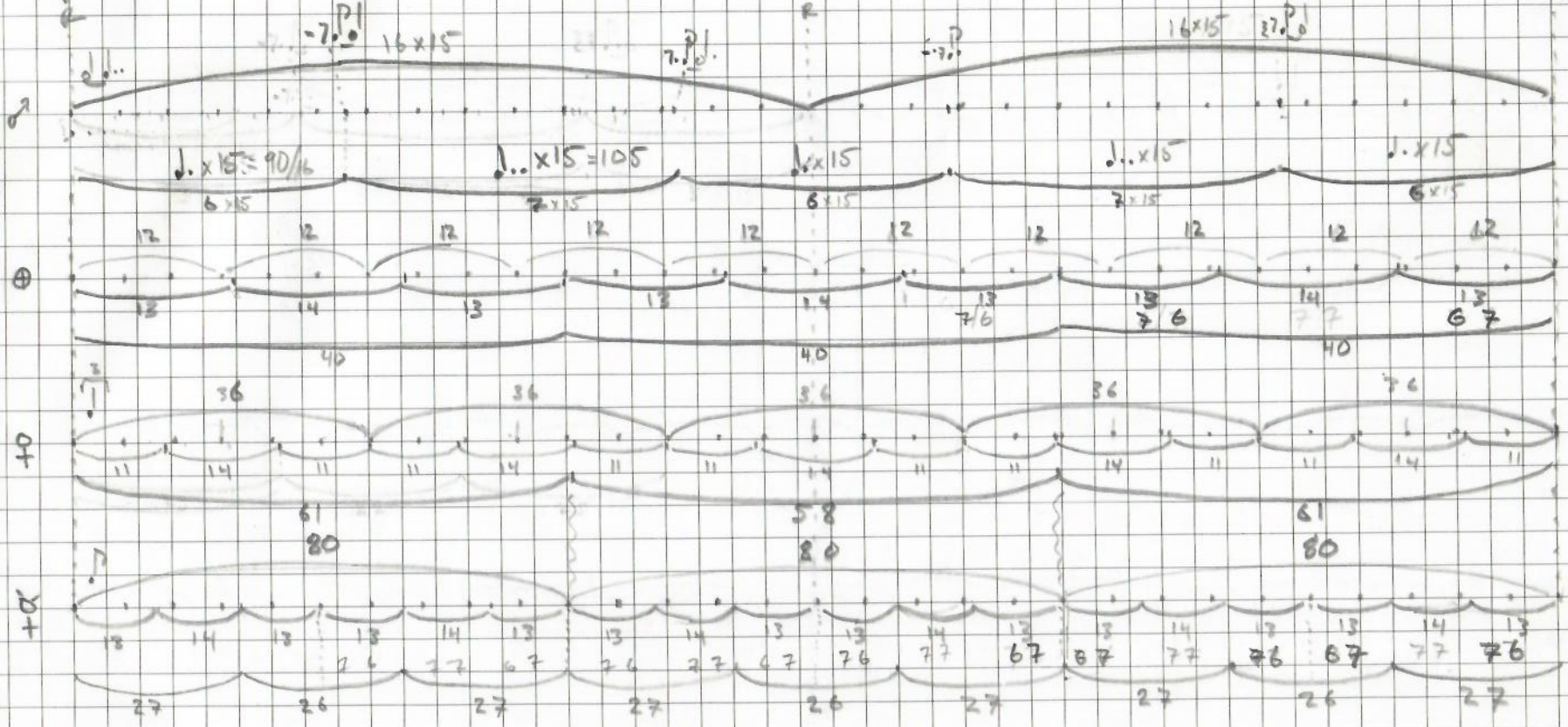
♂ = 40 P (10M) x 12  
 ⊕ = 24 P (8M) x 15  
 ♀ = 20 P (2.5 x 8)  
 ♀ = 30 P (6 x 5) x 8

861



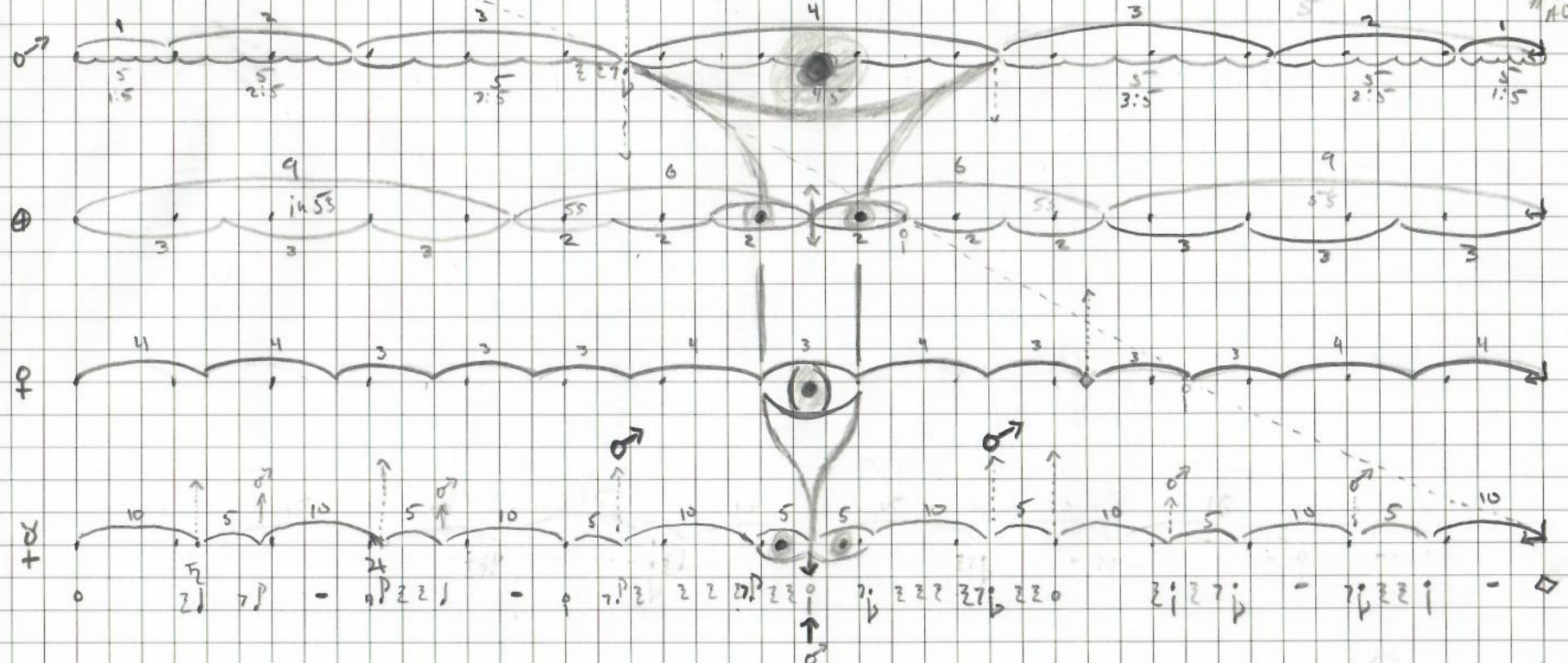
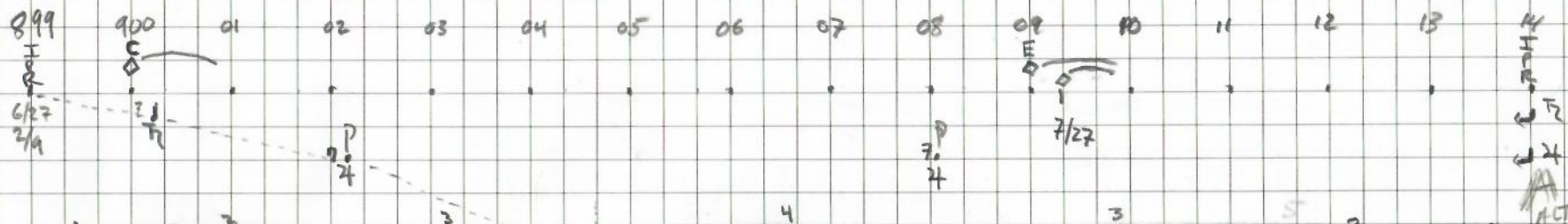
267

\* 20 21 22 23 24 25 26 27 28 29 30 31 32 33 34 35 36 37 38 39 40 41 42 43 44 45 46 47 48 49 50 51 52 53 54 55 56 57 58 59 60 61 62 63 64 65 66 67 68 69 70 71 72 73 74 75 76 77 78 79 80 81 82 83 84 85 86 87 88 89 90 91 92 93 94 95 96 97 98 99 100



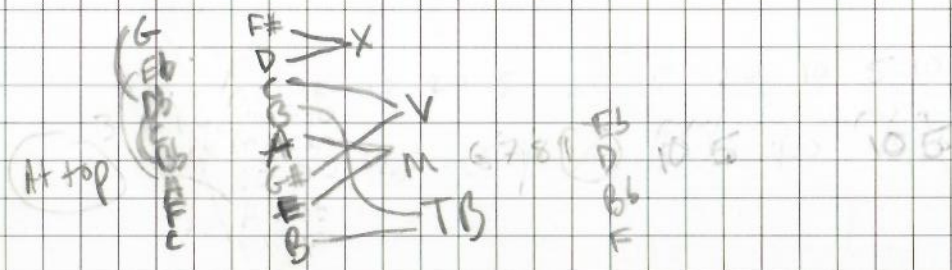
Notes: ♭, ♯ of her 19s are Res w/ ⊕

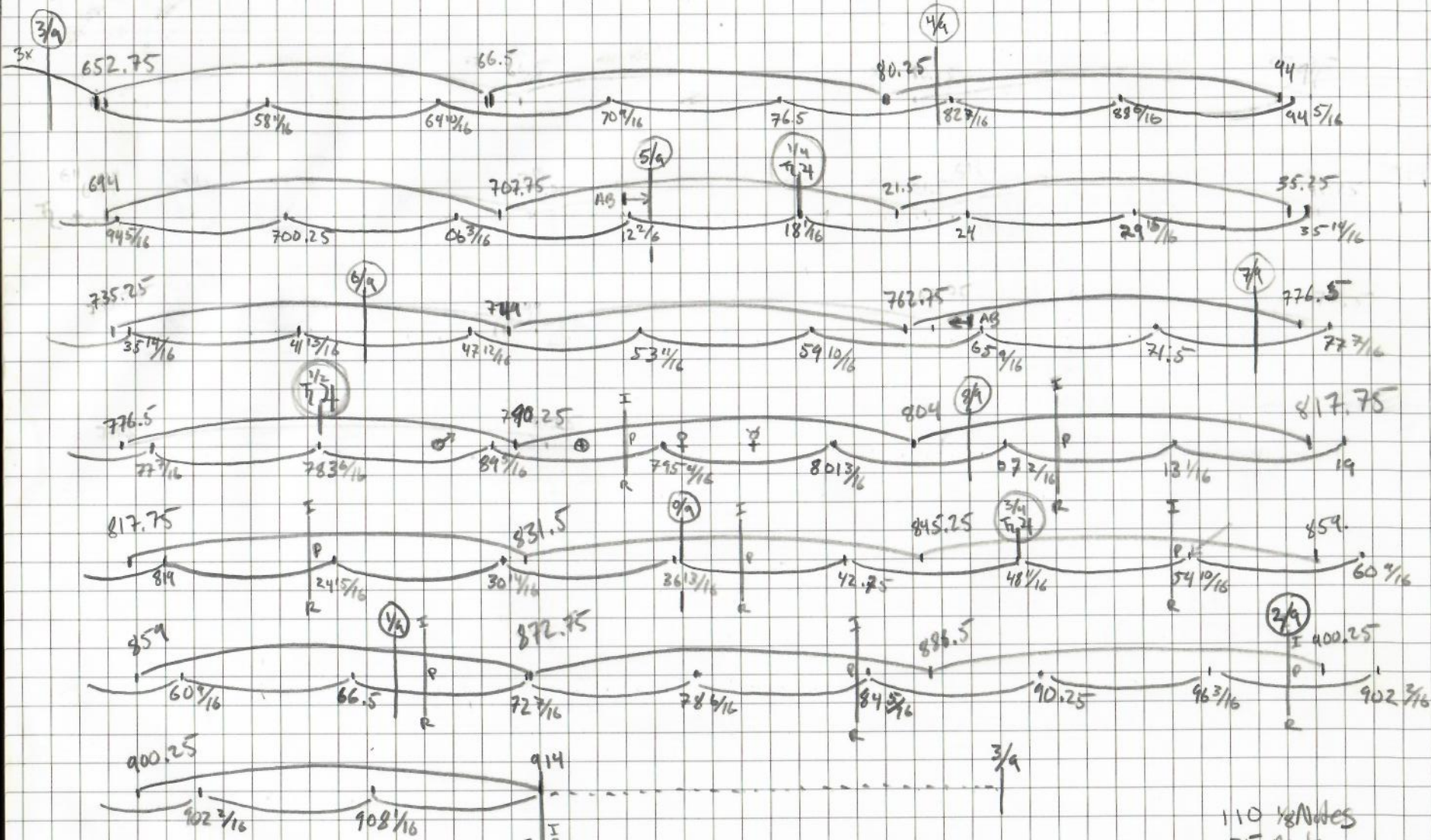
2nd Half  
 ↳ Explore Triplet Possibilities in "6 sections"  
 of ⊕ + ♯.  
 - ~~Find w/ ...~~



c Lydian.

c Lydian #5 / E Mixob6 → A → A





110 1/2 Notes  
55 Bars

$F_2 = 19 \times 13.75 M$

$F_1 = 44 \times 5 \frac{15}{16} M$

23.75 Bars  
95 16th Notes

Subdivisions

$\frac{1}{4} F_2 = 5, 10, 11, 22$	$\frac{10}{19}$
$\frac{6}{7} F_1 = 8, 9, 8$	$\frac{19}{10}$
$\frac{1}{16} F_2 = 5, 19$	$\frac{19}{10}$
$\frac{5}{4} F_1 = 11, 10, 11$	$\frac{19}{10}$

in 5's or 11's

in 5's or 19's

